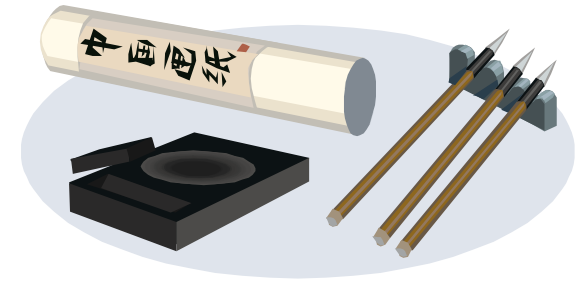


# Ancient China Study Guide

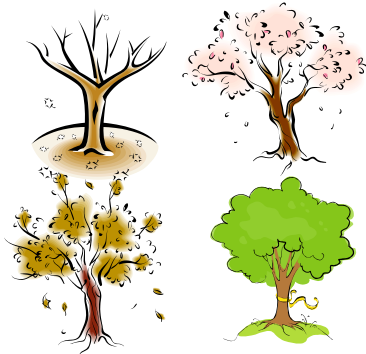


**Part of Asia**

祿



**Written Language:**  
Characters, symbols



**Climate:** Four Seasons  
**Land:** Forests, hills,  
mountains, and  
deserts



**River:** Huang He,  
\*irrigation for farming\*

## Terms to Know:

Climate: the weather in an area over a long period of time

Land: the solid surface of the Earth

Environment: your surroundings

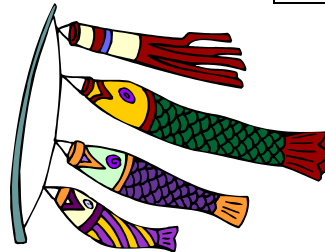
# Ancient China Study Guide



philipmartin.info

## Architecture:

The Great Wall of China



## Contributions:

Bronze, Compass,  
Silk, Fireworks, Kites



## Terms to Know:

Ancient: long, long ago

Architecture: the design of buildings

Contribution: the act of giving or doing something

### History

SOL 2.1 The student will explain how the contributions of ancient China and Egypt have influenced the present world in terms of architecture, inventions, the calendar, and written language.

### Maps

SOL 2.5 The students will develop map skills by:

- b) locating the selected rivers (Huang He River in China and the Nile River in Egypt) on maps.

Unit Begins \_\_\_\_\_

Unit Assessment \_\_\_\_\_